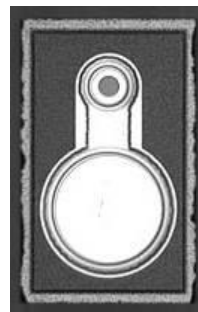


Features

- : 650 nm wavelength range
- : 25 μm Emitting diameter
- : Other configurations available on request

Description



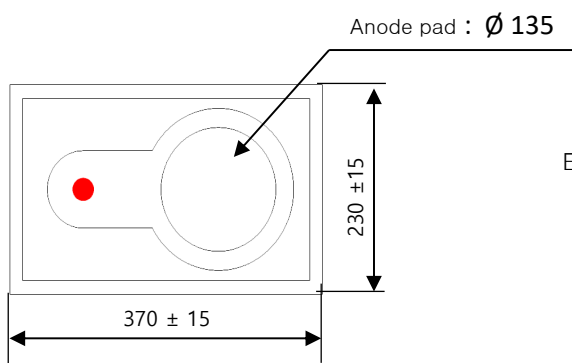
Applications

- : Sensors
- : Industrial applications

Absolute Maximum Ratings

Parameter	Rating
Storage Temperature	-40 to 100 °C
Operating Temperature	-20 to 70 °C
Continuous Forward Current	10mA
Continuous Reverse Voltage	5V (@10 μA)

Dimensions



**Electro-Optics Characteristics ($T_a=25^{\circ}\text{C}$ unless otherwise stated)**

Parameters	Symbol	Specified			Unit	Test Conditions
		Min.	Typ.	Max.		
Total Radiant Flux	Φ_o		0.2		mW	$I_f=5\text{mA}$
Peak Wavelength	λ_p	640	650	665	nm	$I_f=5\text{mA}$
Forward Voltage	V_f		2.1		nm	$I_f=5\text{mA}$
Reverse Current	I_R			100	nA	$V_R=10\text{V}$

Test Data were measured in TO header of wire bonded chip

Value is referenced to the vender's measurement system (correlation to customer product is required).

Notes

* These specifications are subject to change without notice.

**NOTICE**

The inherent design of this component causes it to be sensitive to electrostatic discharge(ESD). To prevent ESD-induced damage and/or degradation to equipment, take normal ESD precautions when handling this product